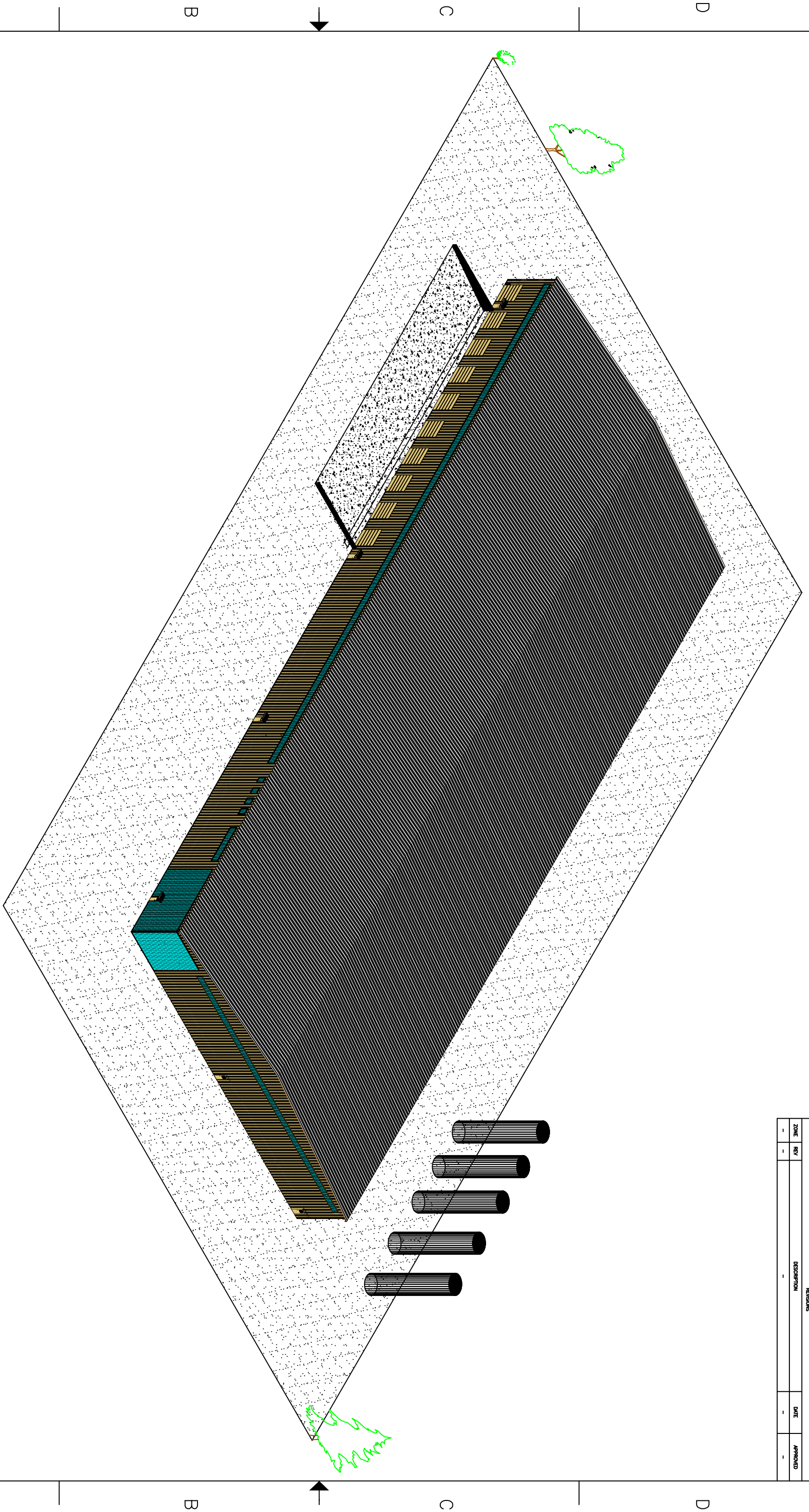


8 7 6 5 4 3 2 1

REVISIONS		DATE	APPROVED
ZONE	REV	DESCRIPTION	
-	-	-	-



PROFESSIONAL ENGINEER
 THIS DOCUMENT IS THE PROPERTY OF ROZELL INDUSTRIES INC.(R/I).
 AND SHALL NOT, WITHOUT THE EXPRESS WRITTEN PERMISSION OF R/I, BE
 REPRODUCED OR TRANSMITTED IN ANY FORM OR BY ANY MEANS, ELECTRONIC
 OR MECHANICAL, INCLUDING PHOTOCOPYING, RECORDING, OR BY ANY INFORMATION
 BEING ON FILED BY R/I TO SUCH PERSONS SHALL NOT BE USED FOR
 FURNISHING INFORMATION TO ANY THIRD PARTY FOR ANY PURPOSE OTHER
 THAN THAT FOR WHICH IT IS ISSUED.

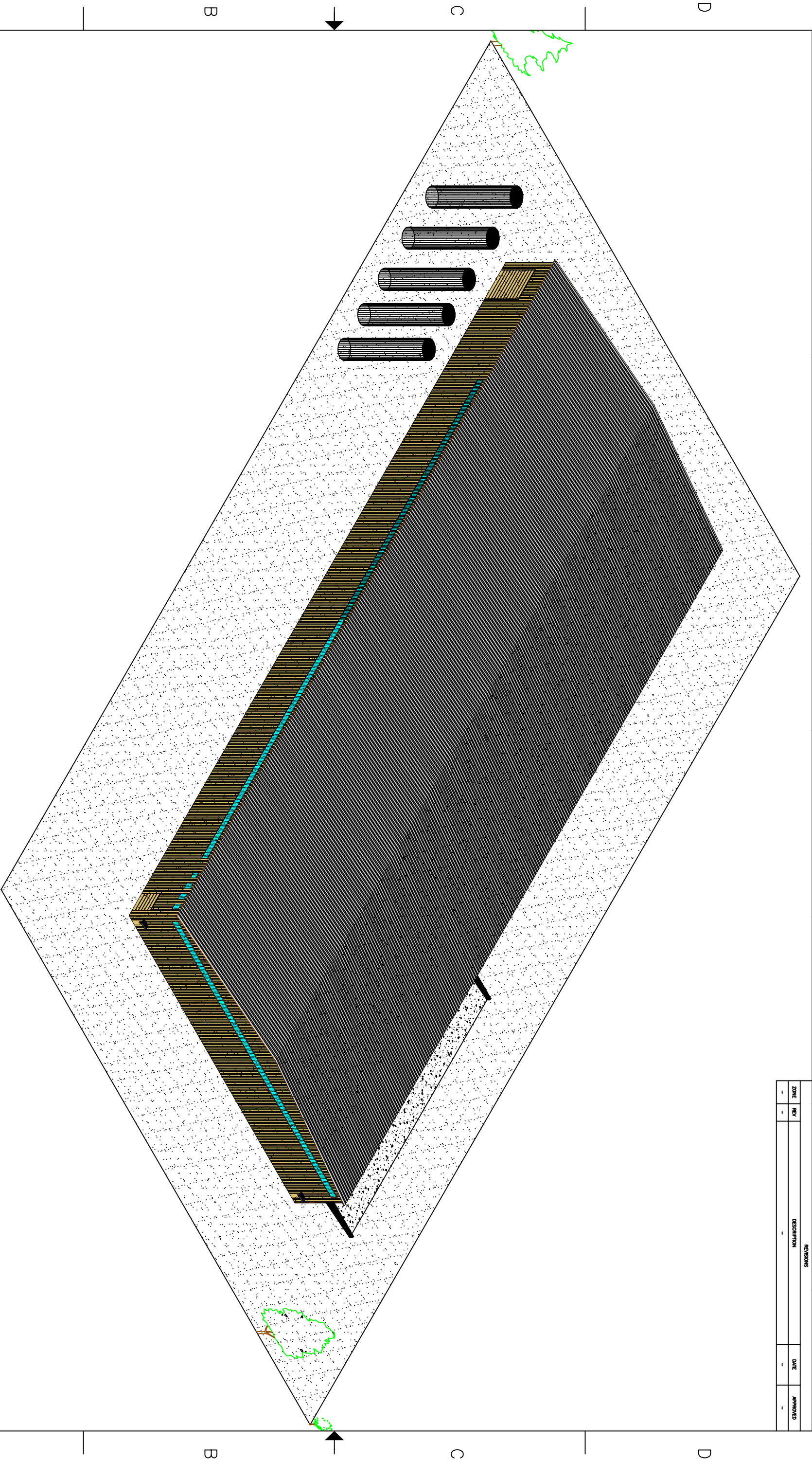
Rozell Industries, Inc.		PROJECT	220 x 500 BUILDING
129 Park Road - Queensbury General & Mechanical Contractors (518)793-2634		LOCATION	INTERNATIONAL PAPER SITE, CORINNH
		CUSTOMER	PHILLMET
		ARCHITECT	-
		JOB NO.	QUOTE
DO NOT SCALE THIS DRAWING			
DRAWN	TDW 12/6/06	SIZE	D
CHECKED	-	NEXT ASSEMBLY	-
APPROVED		DWG. NO.	-
SCALE		SHEET	3 OF 4
		REV	0

8 7 6 5 4 3 2 1

A B C D A B C D

8 7 6 5 4 3 2 1

REVISIONS		DATE	APPROVED
ZONE	REV	DESCRIPTION	
-	-	-	-



8 7 6 5 4 3 2 1

Rozell Industries, Inc.
 129 Park Road - Queensbury
 General & Mechanical Contractors
 (518)793-2634

PROJECT: 220 x 500 BUILDING
 LOCATION: INTERNATIONAL PAPER SITE, CORINNH
 CUSTOMER: PHILLMET
 ARCHITECT: -
 JOB NO: QUOTE

SHEET NAME: NORTHEAST ISOMETRIC

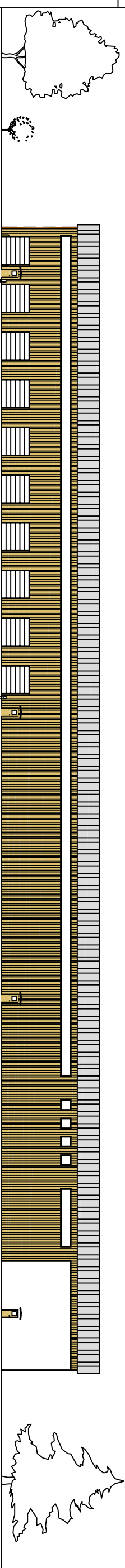
DO NOT SCALE THIS DRAWING

DRAWN	TDW 12/6/06	SIZE	D	NEXT ASSEMBLY		DWG NO.		SHEET	4 OF 4	REV	0
CHECKED		APPROVED		SCALE							

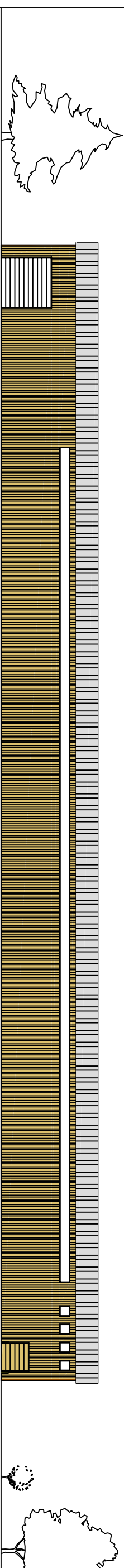
PROPRIETARY AND CONFIDENTIAL
 THIS DOCUMENT IS THE PROPERTY OF ROZELL INDUSTRIES, INC. (R.I.) AND SHALL NOT, WITHOUT THE EXPRESS WRITTEN PERMISSION OF R.I., BE REPRODUCED, COPIED, OR TRANSMITTED IN ANY FORM OR BY ANY MEANS, ELECTRONIC OR MECHANICAL, INCLUDING PHOTOCOPYING, RECORDING, OR BY ANY INFORMATION STORAGE AND RETRIEVAL SYSTEM. R.I. SHALL NOT BE RESPONSIBLE FOR FURNISHING INFORMATION TO ANY THIRD PARTY FOR ANY PURPOSE OTHER THAN THAT FOR WHICH IT IS LOANED.

8 7 6 5 4 3 2 1

REVISIONS		DATE	APPROVED
ZONE	REV	DESCRIPTION	
-	-	-	-



WEST ELEVATION



EAST ELEVATION

8 7 6 5 4 3 2 1

A

B

C

D

A

B

C

D

Rozell Industries, Inc.
 129 Park Road - Queensbury
 General & Mechanical Contractors
 (518) 793-2634

PROJECT: 220 x 500 BUILDING
 LOCATION: INTERNATIONAL PAPER SITE, CORINTH
 CUSTOMER: PHILLMET
 ARCHITECT: -
 JOB NO: QUOTE

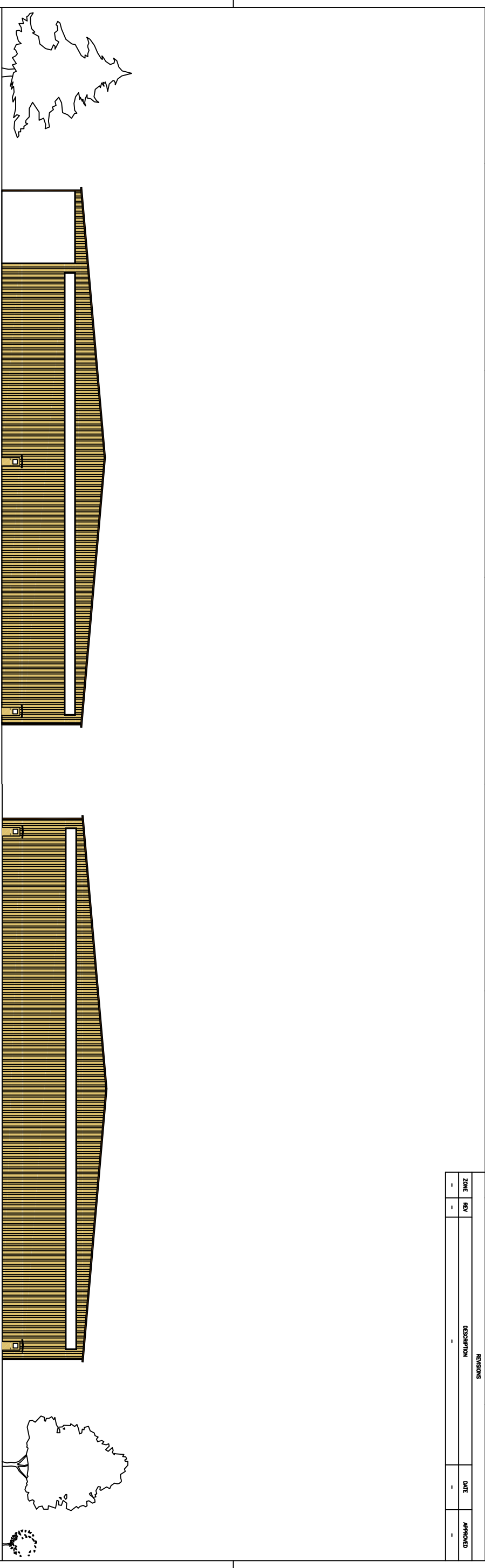
DO NOT SCALE THIS DRAWING
 SHEET NAME: EAST AND WEST ELEVATIONS

DRAWN	TDW 12/5/06	SIZE	D	NEXT ASSEMBLY	DATE	REV
CHECKED	APPROVED	SCALE				0

PROFESSIONAL ENGINEER
 THIS DOCUMENT IS THE PROPERTY OF ROZELL INDUSTRIES, INC. (RII).
 AND SHALL NOT, WITHOUT THE EXPRESS WRITTEN PERMISSION OF RII, BE
 REPRODUCED, COPIED, OR TRANSMITTED IN ANY FORM OR BY ANY MEANS,
 ELECTRONIC OR MECHANICAL, INCLUDING PHOTOCOPYING, RECORDING, OR
 BY ANY INFORMATION STORAGE AND RETRIEVAL SYSTEM, WITHOUT THE
 WRITTEN PERMISSION OF RII. SUCH PERSONS SHALL NOT BE HELD FOR
 DAMAGES IN ANY MANNER FOR ANY REASON OTHER THAN THAT FOR WHICH IT IS
 ISSUED.

8 7 6 5 4 3 2 1

REVISIONS		DATE	APPROVED
ZONE	REV	DESCRIPTION	
-	-	-	-



SOUTH ELEVATION

NORTH ELEVATION

8 7 6 5 4 3 2 1

A

B

C

D

A

B

C

D



129 Park Road - Queensbury
 General & Mechanical Contractors
 (518)793-2634

PROJECT 220 x 500 BUILDING
 LOCATION INTERNATIONAL PAPER SITE, CORINTH
 CUSTOMER PHILLMET
 ARCHITECT -
 JOB NO. QUOTE

DO NOT SCALE THIS DRAWING
 SHEET NAME NORTH AND SOUTH ELEVATIONS

DRAWN	TDW 12/5/06	SIZE	D	DATE		DWG NO.		REV	0
CHECKED		SCALE		APPROVED					
		SHEET NAME		SHEET		SHEET		SHEET	
		NORTH AND SOUTH ELEVATIONS		2 OF 2					

PROFESSIONAL ENGINEER
 THIS DOCUMENT IS THE PROPERTY OF ROZELL INDUSTRIES, INC. (RI).
 AND SHALL NOT, WITHOUT THE EXPRESS WRITTEN PERMISSION OF RI, BE
 REPRODUCED, COPIED, OR TRANSMITTED IN ANY FORM OR BY ANY
 MEANS, ELECTRONIC OR MECHANICAL, INCLUDING PHOTOCOPYING, RECORDING,
 OR BY ANY INFORMATION STORAGE AND RETRIEVAL SYSTEM, WITHOUT THE
 WRITTEN PERMISSION OF RI. SUCH PERSONS SHALL NOT BE HELD LIABLE FOR
 FURNISHING INFORMATION TO ANY THIRD PARTY FOR ANY PURPOSE OTHER
 THAN THAT FOR WHICH IT IS LOANED.